



CORPORATE GIFTING

## DEAR S'WELL FRIEND,

I started S'well in 2010 with a mission to rid the world of plastic bottles. My approach was simple: create a reusable bottle that looked better, worked harder, and did more to make a positive impact on the world. This was—and continued to be—an audacious goal, but one that I know can affect enormous change.

The past few years at S'well have been full of innovation and excitement. In 2016, S'well launched the ever-whimsical S'ip by S'well, and in 2017 we debuted new forms that allow for even more ways to hydrate on the go, entertain in style and further our mission to use less plastic.

Corporate Sales has been a natural expansion of our growing business. There is an ever-present need for quality corporate gifting that we are able to meet with products that are beautiful, sustainable, and charitable. S'well gives companies the opportunity to enhance their overall sustainability, save on overhead costs and foster a culture of pride within the workplace. In addition, the ability to customize products creates a unique branding opportunity, reinforcing a company's unique identity while tapping into the S'well experience.

Thank you for joining us on our exciting journey. There's more to come, and together we can do amazing things!

*Sarah H. Kauss*

**Sarah Kauss**

Founder & CEO





# CARRY THE ORIGINAL.

The bottle that disrupted the industry and continues to reign supreme.

- **STAND-OUT STYLE**

Completely unique and ever-changing array of colors, patterns and finishes developed by our creative team

- **PRODUCT INNOVATION**

In-house product design team and quality materials deliver on performance

- **PROCESS**

70-step process to ensure safety and quality

- **CHARITY**

Mission-driven company committed to creating impact and supporting communities in need

## Key features that make our products stand out:

- Keeps beverages cold for up to 24 hours and hot for up to 12\*
- Made of vacuum-insulated, high-grade 18/8 stainless steel
- Condensation-free exterior
- Eco-friendly, BPA-free and reusable

\*See [swellbottle.com](http://swellbottle.com) or [sipbyswell.com](http://sipbyswell.com) for more product information.

# THE FORM

When it comes to our products' shapes and designs, we entrust a team of incredibly skilled designers and engineers to make sure each S'well is as streamlined, effective and comfortable to use as possible. From the team's first drawings to the final materials, we refine each form to reflect the original vision of S'well: a product as beautiful as it is hard-working.



**The Original:** This streamlined bottle shape with fluting at the base emulates classic glass bottles. The cap fluting gives it a jewel-like aesthetic.



**The Traveler:** The flared silhouette allows for a natural, ergonomic grip, and the thick, hollow drinking rim and wide mouth ensure a comfortable drinking experience.





**The Tumbler:** The thin, tapered rim and smooth, seamless exterior are designed to emulate a classic glass. The signature S'well droplet logo is featured on the stainless steel lid.

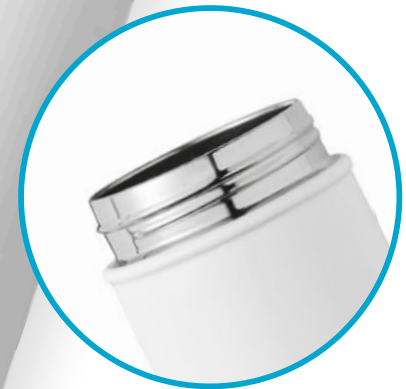
**The Roamer:** The wide-bottomed design harkens back to old-fashioned milk jugs. An open-loop, oval handle allows for plentiful carrying space for fingers, and the recessed base ledge makes for easy, two-handed pouring.

### **S'ip by S'well Bottle:**

The fluting at the bottle's base is an extension of the original S'well design, modified to reflect S'ip by S'well's more whimsical feel.



**S'ip by S'well 10oz:** A smaller version of the S'ip by S'well bottle, the 10oz is designed with kids in mind. The replaceable silicone band attaches at the top of the lid to avoid cap loss.



### **S'ip by S'well Travel Mug:**

The fluting at the base and top ridge build on the design of the S'ip by S'well bottle. The cylindrical shape makes for easy storing. The lid's cap flips open for a one-handed drinking experience.



# S'WELL AT A GLANCE...



## **THERMA-S'WELL™ TECHNOLOGY**

Keeps beverages cold for up to 24 hours  
and hot for up to 12.\*



## **TRIPLE WALLED**

Vacuum-insulated, high-grade  
18/8 stainless steel.



## **ECO-FRIENDLY**

BPA-free and reusable.



## **NO SWEAT**

Condensation-free, the exterior  
will remain dry.

\*See [swellbottle.com](https://swellbottle.com) for more product information.





## CUSTOM PARTNERS

From the start, there was a demand from companies that wanted to share the S'well experience with their clients and employees. We quickly recognized this as an exciting opportunity to help corporations green their workplaces and create brand ambassadors inside and outside of the office. Now S'well is proud to have worked with over 1,000 companies to empower their communities to make mindful decisions, while showcasing their company logo front and center.



# DECORATION





When it comes to adding your artwork to a S'well product, there are two options for application. Artwork can be **laser engraved** (etched down to the stainless steel) or **printed** in up to three Pantone colors. Each mode of application delivers beautiful results—check in with our Custom team if you'd like help deciding which way is best for your custom order.







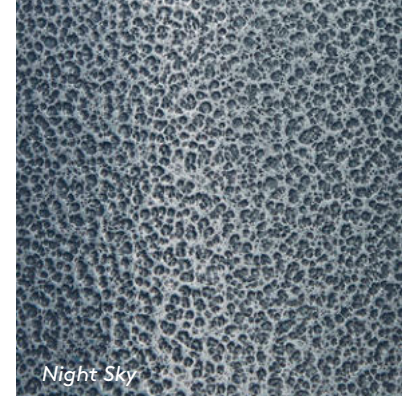
*Turquoise Blue*



*Calacatta Gold*



*Scarlet*



*Night Sky*

# FINISHING TOUCHES

Alongside our unique patterns and fresh designs, S'well is known for our innovative finishes and textures. From the high-gloss feel of our Elements Collection to the smooth matte of our Satin and Wood Collections to the easy-grip feel of our Stone Collection, every S'well is intentionally designed from the inside out.



*Yellow Gold*



*Spearmint Green*



*Milky Way*



*Onyx*



*Ocean Blue*



*Sparkling Champagne*



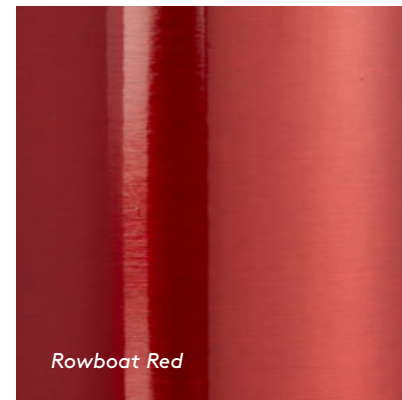
*Midnight Blue*



*Bubblegum Pink*



*Purple Garnet*



*Rowboat Red*





## THE SATIN COLLECTION

---

Our Satin Collection features a vivid kaleidoscope of colors in a semi-matte, soft-to-the-touch finish.





### SCARLET

9 oz 10009-A18-06660  
 17 oz 10017-A18-06660  
 25oz 10025-A18-06660



### OXFORD

9 oz OXSA-09-B17  
 17 oz OXSA-17-B17  
 25oz OXSA-25-B17



### LONDON CHIMNEY

9 oz SALC-09-B14  
 17 oz SALC-17-B14  
 25oz SALC-25-B14



### HUNTING GREEN

9 oz SAHG-09-B15  
 17 oz SAHG-17-B15  
 25oz SAHG-25-B15



### TURQUOISE BLUE

9 oz SATB-09-A15  
 17 oz SATB-17-A15  
 25oz SATB-25-A15



### BIKINI PINK

9 oz TWB-BIKIN  
 17 oz ST-BIKIN  
 25oz LWB-BIKIN



## THE SHIMMER COLLECTION

Featuring a glossy, lacquered finish and bold, primary colors, our Shimmer Collection is a classic favorite.



### ANGEL FOOD

9 oz TWB-ANGL  
17 oz TWB-ANGL  
25oz TWB-ANGL



### BLUE SUEDE

9 oz TWB-BLES15  
17 oz TWB-BLES15  
25oz TWB-BLES15



### SILVER LINING

9 oz TWB-SLVR07  
17 oz SWB-SLVR07  
25oz LWB-SLVR07



### OCEAN BLUE

9 oz TWB-BLUE02  
17 oz SWB-BLUE02  
25oz LWB-BLUE02



### ROWBOAT RED

9 oz TWB-RED06  
17 oz SWB-RED06  
25oz LWB-RED06

## THE GLITTER COLLECTION

---

With its sparkled, lacquered finish and decadent array of colors, our Glitter Collection makes for the perfect, eye-catching accessory.



### SPARKLING CHAMPAGNE

9 oz	TWB-CHMP19
17 oz	GWB-CHMP19
25oz	LWB-CHMP19



### SWEET MINT

9 oz	TWB-MIN20
17 oz	GWB-MIN20
25oz	LWB-MIN20



### SMOKEY EYE

9 oz	GLSE-09-B15
17 oz	GLSE-17-B15
25oz	GLSE-25-B15



### MOONSTONE

9 oz MNST-09-B17  
17 oz MNST-17-B17  
25oz MNST-25-B17



### ONYX

9 oz TWB-ONX  
17 oz FWB-ONX  
25oz LWB-ONX



### SMOKEY QUARTZ

9 oz TWB-SMO06  
17 oz FWB-SMO06  
25oz LWB-SMO06

## THE STONE COLLECTION

Featuring an opaque finish and a durable stone-like texture for added grip, our Stone Collection emulates the most coveted semi-precious gems.



### PURPLE GARNET

17 oz 10017-A18-06850



### AQUAMARINE

17 oz 10017-A18-06940



### PINK TOPAZ

9 oz 10009-A18-06465  
17 oz 10017-A18-06465  
25oz 10025-A18-06465



### BLUE FLUORITE

17 oz 10017-A18-06940

## THE WOOD COLLECTION

Featuring a smooth, matte finish that highlights the fluid designs in its source material, our coveted Wood Collection embodies the intricacy and beauty of natural woods.



### BLONDE WOOD

9 oz WOBW-09-A15  
17 oz WOBW-17-A15  
25oz WOBW-25-A15



### TEAKWOOD

9 oz TWB-TEAK01  
17 oz WWB-TEAK01  
25oz LWB-TEAK01



### WHITE BIRCH

9 oz WBWO-09-B17  
17 oz WBWO-17-B17  
25oz WBWO-25-B17

## THE ELEMENTS COLLECTION

---

Highlighting the refinement of nature's most stunning raw materials—think ancient quarries and intricate shells—the Elements Collection is the perfect marriage of opulent and organic.



ABALONE SHELL

17 oz 10017-A18-03330

## THE RUSTIC COLLECTION

---

Our Night Sky bottle has a super-durable texture and a celestial, two-tone finish.



NIGHT SKY

17 oz NSRC-17-B17  
25 oz NSRC-25-B17

## THE GALAXY COLLECTION

---

The Galaxy Collection makes a cosmically cool statement with astral hues and an iridescent lacquered finish.



MILKY WAY

9 oz MWGA-09-A17  
17 oz MWGA-17-A17  
25oz MWGA-25-A17

## FASHION STYLES

---

Inspired by everything from fashion to art to the natural world, our creative studio is constantly developing new designs and patterns. We frequently update our Corporate Gifting Portal to include new styles, making sure there is always something exciting on tap for our customers. Stay up to date with what's in stock by checking the portal.

**[SWELLBOTTLE.COM/CORPORATE-GIFTS](https://swellbottle.com/corporate-gifts)**



**SPRING EQUINOX**

17 oz   SESO-17-B17



**SANTORINI**

17 oz   FWB-SANT



**OPAL MARBLE**

16 oz   10316-B17-01140



**CALACATTA GOLD**

16 oz   10316-B17-01010



## THE TRAVELER

---

Consider the Traveler the go-anywhere go-to. Ergonomically designed to fit snugly in your hand, this new wide mouth shape is optimal for anything from toting coffee to a morning meeting or staying hydrated at a group fitness class. Add your logo to promote your brand in and out of the office!





### YELLOW GOLD

16 oz 10316-B17-01270



### GREEN JASPER

16 oz 10316-B17-00730



### MIDNIGHT BLUE

16 oz 10316-B17-00640 \$35.00



### TEAKWOOD

12 oz 10312-B17-00820  
16 oz 10316-B17-00820  
20oz 10320-B17-00820



### FLARE

12 oz 10312-B17-00260  
16 oz 10316-B17-00260  
20oz 10320-B17-00260



### MOONSTONE

16 oz 10316-B17-00510  
20oz 10320-B17-00510



### NIGHT SKY

16 oz 10316-B17-00140  
20oz 10320-B17-00140



### WHITE MARBLE

12 oz 10312-B17-00910  
16 oz 10316-B17-00910  
20oz 10320-B17-00910



### SILVER LINING

12 oz 10312-B17-00300  
16 oz 10316-B17-00300  
20oz 10320-B17-00300



### CALACATTA GOLD

12 oz 10312-B17-01010  
16 oz 10316-B17-01010  
20oz 10320-B17-01010



### ONYX

12 oz 10312-B17-00401  
16 oz 10316-B17-00401  
20oz 10320-B17-00401

## THE TUMBLER

Shaped like a classic cup with a thin rim, the Tumbler makes for a comfortable drinking experience—while helping to keep your beverages colder or hotter longer. Perfect for anything from hotel room hydration to serving cocktails at a corporate event to taking on the go, the Tumbler makes a great gift for employees or clients. Make it your own to boost team spirit!



**YELLOW GOLD**

18 oz 10418-B17-01270



**CALACATTA GOLD**

10 oz 10410-B17-01010  
18 oz 10418-B17-01010



**TEAKWOOD**

10 oz 10410-B17-00820  
18 oz 10418-B17-00820



**WHITE MARBLE**

10 oz 10410-B17-00910  
18 oz 10418-B17-00910



**ONYX**

10 oz 10410-B17-00401  
18 oz 10418-B17-00401



**MOONSTONE**

10 oz 10410-B17-00510  
18 oz 10418-B17-00510



**NIGHT SKY**

10 oz 10410-B17-00140  
18 oz 10418-B17-00140



## THE ROAMER

---

Sized to share at 40oz and 64oz, the Roamer is ideal for company picnics, corporate parties or events, and employee outings. Like all S'well products, the Roamer's triple-walled, stainless steel insulation keeps beverages cold for up to 24 hours or hot for up to 12, and its ergonomically designed handle and base ledge make for easy carrying and pouring.



### ONYX

40 oz 10540-B17-00401  
64 oz 10564-B17-00401



### MOONSTONE

40 oz 10540-B17-00510  
64 oz 10564-B17-00510



### NIGHT SKY

40 oz 10540-B17-00140



### TEAKWOOD

40 oz 10540-B17-00820  
64 oz 10564-B17-00820



### YELLOW GOLD

40 oz 10540-B17-01270  
64 oz 10564-B17-01270



# Sip by S'well™

---

Our S'ip by S'well line was launched in 2016 as a way to give S'well lovers everywhere even more stylish, on-the-go hydration options. With whimsical colors and a sleek, streamlined shape, S'ip by S'well makes staying hydrated more fun than ever.



## THE 15OZ

---

Inspiringly colorful, our 15oz S'ip by S'well is the perfect size for everyday hydration.



BUBBLEGUM PINK

15 oz    200115670



CHILI RED

15 oz    200215620



PURPLE ROCK CANDY

15 oz    200115540



COTTON CANDY BLUE

15 oz    200115451



**JERSEY BLUE**

15 oz    200215410



**JELLY BEAN GREEN**

15 oz    200115330



**BLUE RASPBERRY  
GUMMY**

15 oz    200115461



**MARSHMALLOW  
WHITE**

15 oz    200115100



**BLACK LICORICE**

15 oz    200115001

## THE TRAVEL MUG

---

Yet another way to brighten up every day: the S'ip Travel Mug. Ideal for morning commutes, group fitness classes, or park days for an effortless—and adorable—on-the-go drinking experience.



**PINK PUNCH**

16 oz 20316-A18-03965



**JERSEY BLUE**

16 oz 20316-A18-03540



**FLAT WHITE**

16 oz 20316-A18-00410



**COFFEE BLACK**

16 oz 20316-A18-00601



**CLEAN SLATE**

16 oz 20316-D17-00520

## THE 23OZ

---

Our 23oz S'ip by S'well is great for staying hydrated all day long — and making less trips to the company water fountain.



**PINK PUNCH**

23 oz    20023-A18-03965



**JERSEY BLUE**

23 oz    20023-A18-03540



**JELLY BEAN GREEN**

23 oz    20023-E17-00740



**BLUE RASPBERRY  
GUMMY**

23 oz    200123330

# ORDERING INFORMATION

Apply for your Custom or Corporate Gifting order at  
***swellbottle.com/corporate-gifts*** and ***corporategifts.sipbyswell.com***

**PRICING:** Please contact S'well's Corporate Sales team at corporatesales@swellbottle.com or (646) 755-6357 for product pricings.

**CHANNELS OF SALES:** S'well does not allow retailers to sell online, except with explicit written permission. This includes website(s), Amazon.com, or any other online marketplace.

**ORDER REQUIREMENTS:** First time minimum order is 100 units. Products must be ordered in case quantities of four (4). A completed order application must be submitted through swellbottle.com/corporategifts or corporategifts.sipbyswell.com. Each individual resale location must be approved by S'well. Please allow up to 1-2 business days for a reply; response time may vary seasonally.

**BRAND GUIDELINES:** S'well's Brand Guidelines must be adhered to for all customization and decoration of S'well products performed outside of S'well's ordinary customization channel or by external customization partners. S'well reserves its rights, in its sole discretion, to approve or deny of any customization performed external of S'well's direct partners. Logos or artwork not permitted to be used in the customization of S'well products includes, but is not limited to: slogans, hashtags, political affiliations, religious affiliations, evidence of an unhealthy lifestyle, threatening or harassing language, contact information for companies such as email addresses, phone numbers and web addresses, and any other information that is counteractive to the Brand Guidelines.

**CUSTOM ORDERS:** S'well reserves the right to approve or deny any customization (which includes, but is not limited to, printed logos and etching) to S'well products ("Custom Products"), in accordance with the S'well Brand Guidelines. All custom orders are managed by S'well. For more information contact corporatesales@swellbottle.com.

**INTERNATIONAL ORDERS:** All international sales are managed by S'well. For more information contact corporatesales@swellbottle.com. U.S. retailers are strictly prohibited from distributing outside the U.S.

**PAYMENT TYPE:** Merchandise and applicable freight charges will be invoiced when order is processed. Full pre-payment by credit card is required to complete the customization order submitted to S'well. We require pre-payment by credit card for the first 3 orders, after which Net 30 terms are available upon credit approval.

**PAYMENT TERMS:** S'well reserves the right at any time to suspend or change credit terms if your account becomes past due. Failure to pay invoices when due will make all subsequent invoices immediately due and payable irrespective of terms. Additionally, S'well may withhold all subsequent deliveries until the account is settled in full.

**ORDER PROCESSING TIME:** Processing time is 2-3 weeks from date of approved proof and receipt of pre-payment.

**SHIPPING:** U.S. orders ship via UPS Ground. Freight charges apply and will be added to invoice upon processing. Alternatively, Buyer may request shipment with a carrier account of their preference. Please provide any special shipping instructions or guidelines at the time the order is placed. Buyer is responsible for filing damage claims with the carrier if the goods are damaged in transit.

**DAMAGE CLAIMS:** If you have received a defective customized S'well product, please contact [customops@swellbottle.com](mailto:customops@swellbottle.com) within fourteen (14) days of receipt of the customized product. In your damage report, include your reference number and pictures of the alleged damage so our team can properly assess the claim. Failure to make a claim within the stated time constitutes acceptance of the goods as is. Any damage to a product that has product alterations that were performed by any party other than by S'well directly prevents S'well from processing the claim and providing any guarantee of the product's warranty.

**INTELLECTUAL PROPERTY:** Buyer agrees that it will not manufacture, purchase, distribute, advertise, promote, display, offer for sale, or sell any product that is an imitation or counterfeit of, or is otherwise confusingly similar to, any S'well product while Buyer maintains an active account with S'well or otherwise advertises, promotes, offers for sale or sells S'well products. Buyer agrees that it will not purchase S'well products from any source other than from S'well.

**PERMISSION TO ADVERTISE:** For all custom orders approved by S'well, Buyer agrees that S'well has the right to use the Custom Products bearing Buyer's name and/or logo to advertise and promote S'well's custom products and decorating capabilities. S'well will not present images or sample products of Custom Products in a manner that states there is a continuing relationship or ongoing affiliation between S'well and Buyer.

**RELATIONSHIP OF THE PARTIES:** No agency, partnership, joint venture, or employment relationship is created as a result of this transaction and/or Buyer's acceptance of this Agreement and neither party has any authority of any kind to bind the other in any respect.

**FALSE ASSOCIATION:** Buyer agrees not to promote, display, or otherwise use any S'well products in any way which would create or imply an association between S'well and Buyer or any other company, entity, individual, cause or campaign, or otherwise imply that S'well sponsors, approves of, or is somehow connected to Buyer or any other company, entity, individual, cause or campaign, including but not limited to, social media posts, website displays, or any advertising/marketing materials.

**PURPOSE FOR USE:** Buyer represents that its stated "purpose for use" as communicated to S'well for this order is truthful and accurate, and Buyer agrees that it will not use any S'well products obtained through this order for any other purpose without express written permission from S'well, including but not limited to, unauthorized reselling. Buyer may not resell S'well products to any third party reseller, distributor or discount company. Buyer accurately represents that if they are purchasing the S'well products for a client of Buyer's, that Buyer has adequate authority to purchase such products on their client's behalf. Buyer may not purchase these S'well products to be sold as a gift with another product of Buyer's or Buyer's client. S'well has the option of investigating such purpose for use provided by Buyer to ensure S'well products remain in authorized channels of sale and trade without seeking permission from Buyer. S'well is not obligated to provide Buyer with its investigative conclusions.



**MODIFICATION OF BOTTLES:** Buyer agrees that it will not modify the S'well products in any way, including, without limitation, by adding decals, logos, artwork, or other decorations. In the event Buyer obtains written authorization from S'well to resell the S'well products, Buyer will ensure that such products are resold in their original packaging. Any unauthorized modification of S'well products by Buyer may result in termination of this Agreement.

**BUYER'S WARRANTIES:** Buyer represents and warrants that (i) it is the owner of, or otherwise has the right to use, any logo, design, artwork or any other material submitted to S'well with this custom order ("Buyer Content"); (ii) Buyer Content does not and will not contain content that Buyer has produced by infringing or encroaching upon any third party's personal, contractual, or property rights, including without limitation, patent, trademark, copyright, trade dress, rights of privacy or publicity, or trade secret rights; (iii) and, any use of Buyer Content by S'well pursuant to this custom order, including but not limited to, reproductions of Buyer Content and affixation of Buyer Content to S'well products, does not and will not violate any third party's personal, contractual, or property rights, including without limitation, patent, trademark, copyright, trade dress, rights of privacy or publicity, or trade secret rights.

**BUYER INDEMNIFICATION:** Buyer agrees to indemnify and hold S'well harmless against any and all loss, liability, damages, expenses, costs (including reasonable attorney's fees) arising, directly or indirectly, from any claim, action or suit, actual or threatened, of whatever nature (including the settlement thereof) which would constitute a breach of Buyer's Warranties above or any other portion of this Agreement.

**ASSIGNMENT:** Buyer shall not assign any of its rights, interests, duties, obligations, remedies or work in progress associated with this Agreement without prior written approval from S'well and any attempted assignment without S'well's approval shall be void ab initio. Without limiting any other right, S'well may assign its rights and obligations under this Agreement to an affiliated company, and in connection therewith may modify the terms hereof to comply with the laws of the jurisdiction, and Buyer shall not unreasonably withhold, delay or condition its consent to any such modifications.

**GOVERNING LAW:** The terms and conditions of this Agreement shall be governed by and construed in accordance with the laws of the state of New York without reference to any conflicts of law principles. Any proceedings arising out of or in connection with this Agreement shall be brought in any federal or state court in New York, New York.

**NO WAIVER:** No verbal statements, actions, omissions or course of conduct by S'well shall be construed as a waiver by S'well of any right or remedy under law, in equity, or under this Agreement.

All orders are subject to the acceptance of S'well. The business relationship between S'well and Buyer is "AT WILL"; that is, S'well is free at any time to choose those with whom it wishes to deal. Moreover, S'well has the right at any time to terminate the relationship for any reason whatsoever.

## THANK YOU FOR JOINING US ON OUR S'WELL JOURNEY!

We are proud to create products that look great and give back, and to share our enthusiasm for making a difference in the world with like-minded companies and individuals. By actively seeking out ways to develop sustainable alternatives to plastic, we can all begin to take small steps that eventually lead to great change.

*To learn more about S'well's story and impact, visit [swellbottle.com](https://swellbottle.com)*

## CONTACT US

646.755.6357

[corporatesales@swellbottle.com](mailto:corporatesales@swellbottle.com)

© 2018 S'well Bottle. All Rights Reserved.

[SWELLBOTTLE.COM/CORPORATE-GIFTS](https://swellbottle.com/corporate-gifts)

[@swellbottle](#) | [#swellbottle](#)

[CORPORATEGIFTS.SIPBYSWELL.COM](https://corporategifts.sipbyswell.com)

[@sipbyswell](#) | [#sipbyswell](#)